

ISOCARP 2015

CONTENT

1. THE PORT OF BRUSSELS
2. THE CANAL PLAN
3. BÉCO DOCK
4. VERGOTE DOCK
5. OUTER PORT

THE PORT AND ITS MISSIONS

11 PUBLIC SHAREHOLDERS :

- Brussels Capital Region (58,05 %)
- City of Brussels (33,4 %)
- 8 Brussels municipalities (Molenbeek–St–Jean, Schaerbeek, St–Gilles, Anderlecht, St–Josse–ten–Noode, Ixelles, Koekelberg, Etterbeek – 4,88 %)
- Bruxelles–Infrastructures–Finances, subsidiary of the « Société Régionale d’Investissement de Bruxelles » (3,67 %)

3 MAIN MISSIONS ON BEHALF OF BRUSSELS CAPITAL REGION:

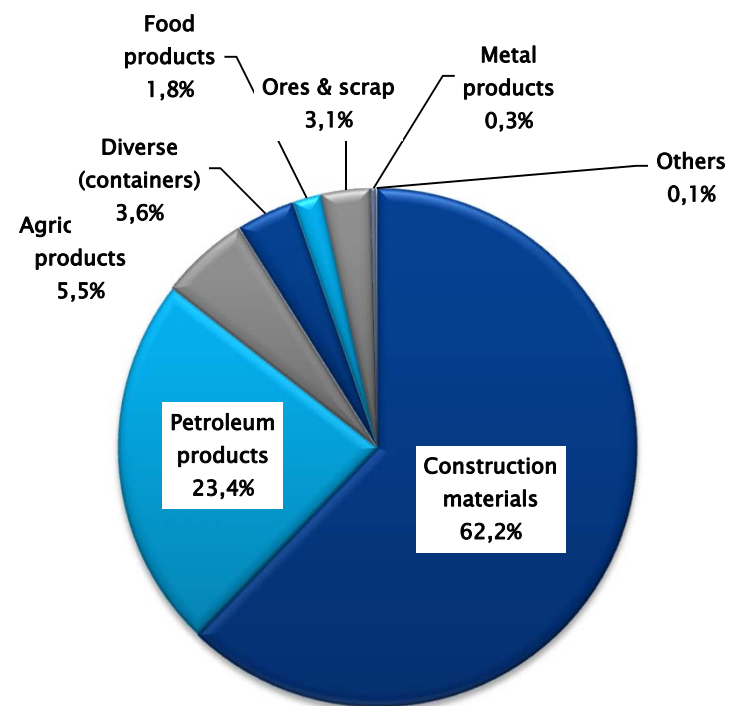
- Waterway management
- Port authority for Brussels: port development, logistics role, major economic player
- Logistics facilitator and important actor for urban distribution

WATERWAY TRAFFICS

Global trafic

(in thousands of tonnes)

	2014	2013	Δ14-13
Brussels traffic	4,439	4,324	+3%
Transit traffic	2,249	2,292	-2%
Total	6,688	6,616	+1%



BENEFITS OF WATERWAY TRAFFIC FOR BRUSSELS

Ecological footprint

97,000 tonnes CO₂ not released

625,000 lorries avoided on the roads



€24.5m spared in terms of external costs



CANAL PLAN

A metropolitan ambition for Brussels

An answer to the demographic boom and the needs for housing and equipment

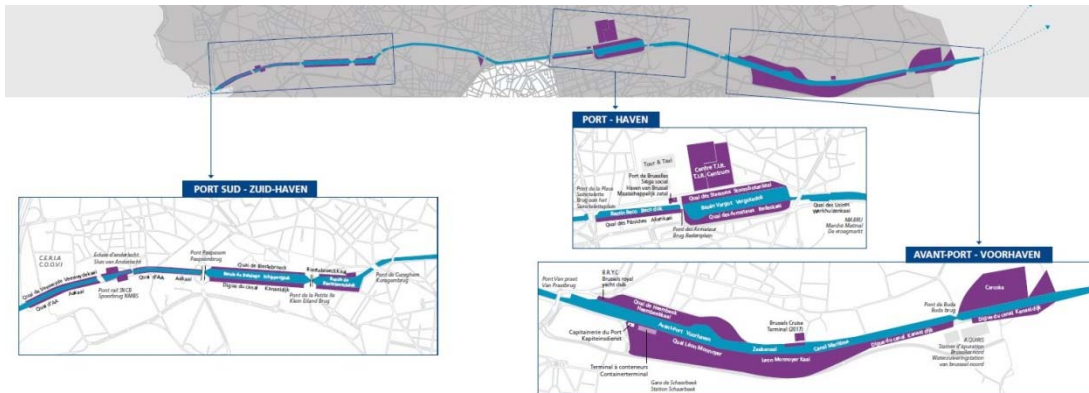
A redeployment of an area affected by marked by deindustrialization and a strengthening of economic activities inducing job creation

A new centrality with the creation of new links between areas and new quality public spaces

CANAL PLAN

Regional area

2800 ha from which 313 ha belong to the public domain

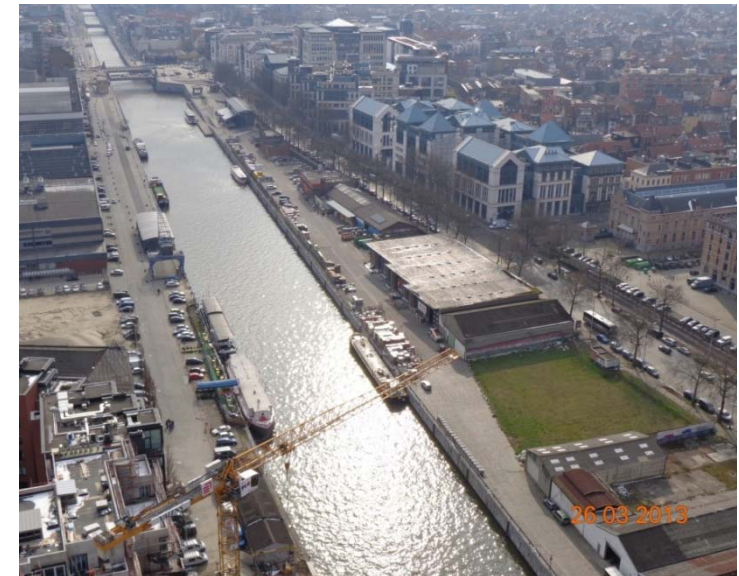


PORT AREA
Total area of 104 ha

BÉCO DOCK : FIRST PILOT PROJECT FOR THE CANAL PLAN

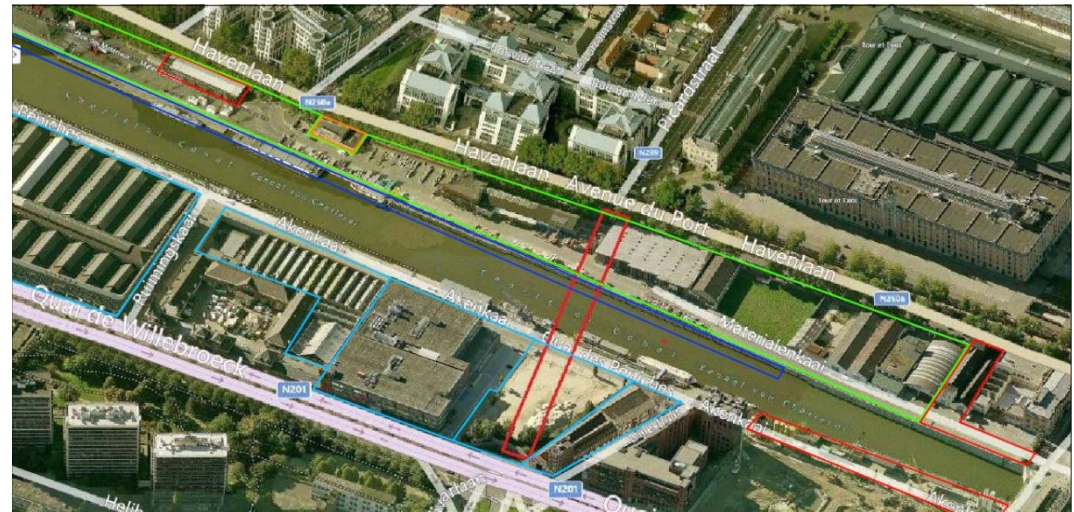
TOTAL AREA: 136,357 m² :

- Left bank :
 - Area : 23,799 m²
 - Width : 74 m – 24 m
 - Length : 750 m (quai des Matériaux)
- Right bank :
 - Area : 80,658 m²
 - length : 750 m (quai des Péniches)
- Waterway :
 - Area : 31,900 m²
 - Width : max 49 m – min 23 m
 - Length : 750 m



BÉCO DOCK : OVERVIEW OF 12 PROJECTS

Project	Player(s)
1. Reassignment K-NAL building	Port + IBGE
2. Reassignment «Ackermaans» building	Port
3. Development of a new park	IBGE / Beliris
4. Building of the Picard Bridge	BXL-Mobilité + Beliris
5. Building of a new warehouse for the Port + promenade along Port HQ	IBGE + Beliris + private promotor (?)
6. New boats (animation, culture,...)	Port
7. Reassignment Citroën area	SAF - Region
8. Reassignment « Ferme des boues »	City of Brussels / Region
9. Real estate project « Canal wharf »	AG Real Estate / Region
10. Development « Project T&T »	Project T&T / Region
11. Reassignment « Gülbakan » site	Gülbakan / Région
12. Promenade «quai des Péniches»	Port /Region/City of Brussels



BÉCO DOCK : EXEMPLES OF FUTURE DEVELOPMENTS



Picard Bridge

Béco Park



VERGOTE DOCK: CHARACTERISTICS

- 11.8 ha water area, 120 m wide, 945 m long, turning basin
- Left bank: 8.7 ha port area, 75 m wide, 944 m long
- Right bank: 5.6 ha port area, 70 m wide, 885 m long
- **12 companies** located on port area, mainly concrete companies, construction material traders, scrap dealer
- Waterway traffic for this dock in 2014: 1m tonnes (representing 23% of Brussels waterway traffic).
- Employment : 230 direct jobs

VERGOTE DOCK

According to the « Plan Régional d'Affectation du Sol (PRAS) démographique » voted by the Brussels Government on 2 may 2013 :

- Vergote dock stays as an area for Port and Transport activities (represented in blue on the map)
- Turning basin: PPAS Willebroek



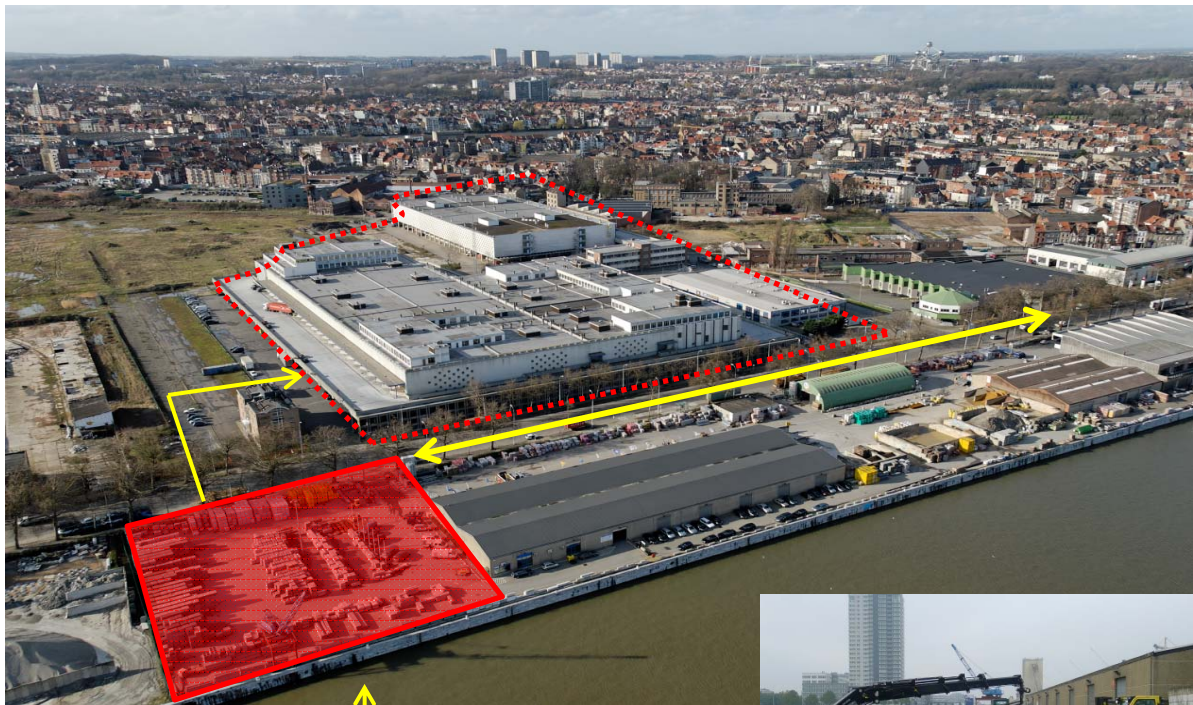
VERGOTE DOCK

INTERBETON : FIRST COMPANY WITH THE CANAL PLAN LABEL

- Project:
 - Competition for ideas involving 4 Brussels architecture schools, winner announced in September 2015
 - Two phases:
 - 1. reorganization of the site and redesign of the production tower
 - 2. Development of a new building, used for the offices of Inter Beton and a public or private equipment



VERGOTE : URBAN TRANSHIPMENT CENTRE (UTC)



3,000 m² area belonging to the Port

- Transshipment of pallets for building materials and, later, FMCG (fast moving consumer goods)
- Pallets traffic 1st semester 2015:
 - volume (x 1,000t) = 6.8
 - number of pallets = 6,990
- Link to the TIR Centre and the future TACT development thanks to a crossing of the *avenue du Port*
- Work begin in 2017

VERGOTE : BUILDING MATERIAL CENTRE

PROJECT :

- “Shopping centre” for building material in Vergote Dock
- Building of a 7,000 m² sustainable warehouse

ADDED VALUE :

- Employment : 120 jobs
- Environment : 300,000 tonnes a year waterway traffic
- Urban integration : openings on the canal and enlargement for the Caviar building

TIMING:

- Mid–September : Contractors must tender their offers to the Port
- End February 2016 : works begin



TACT DEVELOPMENT

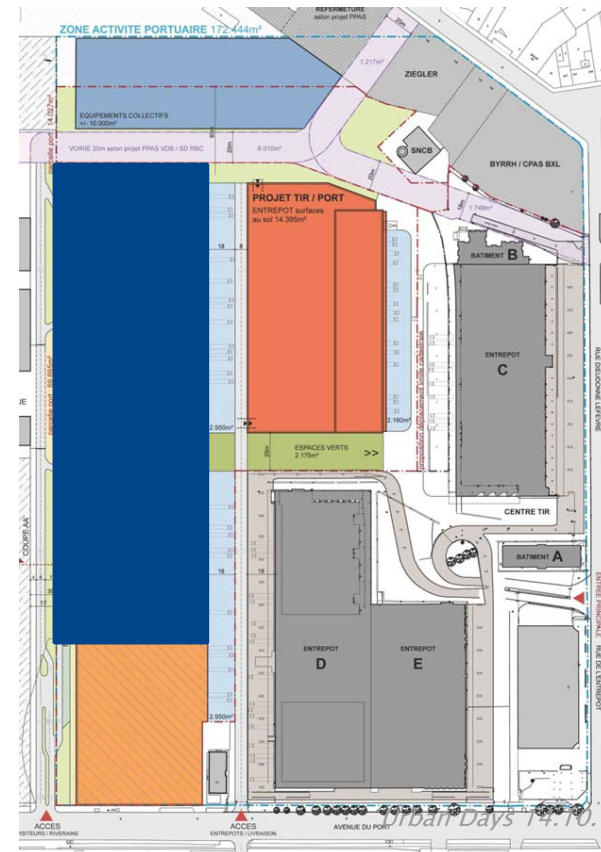
PROJECT

- 20,600 m² area dedicated to urban industry.
Port/Citydev partnership (dark blue)
- Development of a new logistics warehouse (red)
- Development of a 10,275 m² equipment area
(renovation of the former railway station (275 m²) +
building of schools/kindergarten on an area of
10,000 m² (light blue)
- Citroën on 9,000 m² (orange)

ADDED VALUE

- Employment : 600 jobs
- Environment : 30,000 tonnes palette traffic
(Masterplan 2030)
- Urban integration : two clearance zones along the
roads in accordance with the Canal Plan

Plan d'implantation du projet approuvé
par le GRBC le 20/12/12



5. OUTER PORT

- From Van Praet bridge to the Ring
- Access : sea port 24/7
- 65.9 ha
- 2014 Traffic : 3.1m tonnes waterway traffic (70% Brussels traffic)
- Draught : 5.8m
- Air draft : 33m



BRUSSELS CRUISE TERMINAL

PROJECT

- Convention between Port, Region and City of Brussels: 13/12/2011
- Terminal for cruise ships and restaurant
- Building of a 240m pontoon, development of the area and creation of a skatepark
- ERDF financing

ADDED VALUE

- Tourism for the Region
- Employment : 100 jobs
- Environment : 35,000 passengers each year

TIMING

- April 2016 : works start
- May 2017 : works end
- June 2017 : inauguration



ROLL ON ROLL OFF TERMINAL

PROJECT

- Roll on–Roll off Terminal for export of second–hand cars to the Port of Antwerp
- Operational in 2017

ADDED VALUE

- Employment: 118 jobs according to the Masterplan 2030
- Environment : 135,000 tonnes waterway traffic each year (Masterplan 2030)



REDEPLOYMENT OF THE MARLY PORT SITE

AREA DEDICATED TO AN ASPHALT PLANT:

- 130,000 tonnes waterway traffic minimum each year
- 26 jobs



REDEPLOYMENT OF THE MARLY PORT SITE

BPOST SORTING CENTRE

- Area: 57,592 m²
- 1,500 jobs – convention between bpost and the Brussels Region
- Planning permission obtained
- Works start in Octobre/November 2015
- Operational in 2017



MERCI – DANK U – THANK YOU



Port de Bruxelles
Place des Armateurs, 6
B- 1000 Bruxelles